

Western Canada Retail Advisors

Notable Transactions Q4 2017

Daniel Lee*, Principal
604.757.5102
daniel.lee@avisonyoung.com

*Daniel J. Lee Personal Real Estate Corporation

Jason Schouten*, Principal
604.757.5103
jason.schouten@avisonyoung.com

*Jason Schouten Personal Real Estate Corporation

Mike Hodge, Vice-President
604.757.5104
mike.hodge@avisonyoung.com

James Shandro, Vice-President
604.647.5073
james.shandro@avisonyoung.com

Connor Eden, Senior Associate
604.757.5105
connor.eden@avisonyoung.com

Jeron Dillon, Senior Associate
604.647.1330
jeron.dillon@avisonyoung.com

British Columbia Deals



Client Freshii

Location Independant on Main Street
Vancouver

Size 1,001 sq.ft

Agency Tenant Representation

Description Retail unit at base of mixed-use development at Main Street & Broadway with East Broadway exposure.



Client Cora

Location Panorama Village
Surrey

Size 2,700 sq.ft

Agency Tenant Representation

Description End cap unit in recently renovated Panorama Village Shopping Centre.



Client Tim Hortons

Location 2839 East Hastings
Vancouver

Size 2,315 sq.ft

Agency Tenant Representation

Description Corner Unit of new mixed-use development at corner of Kaslo Street & East Hastings Street in Vancouver's East Village neighborhood.



Client Pacific Poke

Location 219 Bernard Avenue
Kelowna

Size 1,300 sq.ft

Agency Tenant Representation

Description High profile corner unit on Bernard Avenue in Downtown Kelowna.



Client Pacific Poke

Location 4461 Lougheed Highway
Burnaby

Size 991 sq.ft

Agency Tenant Representation

Description Strip Centre with surface Parking in Brentwood trade area.



Client Rogers Communications

Location 2828 Granville Street
Vancouver

Size 2,012 sq.ft

Agency Sublease

Description Successful sublease in the affluent South Granville neighbourhood of Vancouver amongst numerous competing leasing opportunities.

Alberta Deals



Client Freshii

Location Emerald Hills Shopping Centre
Sherwood Park

Size 1,300 sq.ft

Agency Tenant Representation

Description In-line unit in new build pad in large format power centre developed by One Properties.



Client Panda Express

Location Manning Town Centre
Edmonton

Size 2,200 sq.ft

Agency Tenant Representation

Description High profile end cap unit in new build pad in existing large format power centre developed by Cameron Developments.



Client Freshii

Location Sunwapta Centre
Edmonton

Size 1,100 sq.ft

Agency Tenant Representation

Description In-line unit on new build pad in existing power centre developed by Cameron Developments.



Client Freshii

Location Strachan Corner
Medicine Hat

Size 1,150 sq.ft

Agency Tenant Representation

Description In-line unit on new pad in newly constructed grocery anchored centre by Brentwood Development.



Client Easy Financial

Location 5071 44 Street
Lloydminster

Size 1,472 sq.ft

Agency Tenant Representation

Description In-line unit in new development by Choice REIT with Highway 16 exposure.



Client Reflex Supplements

Location Canyon Meadows Centre
Calgary

Size 1,628 sq.ft

Agency Tenant Representation

Description Corner unit in Good Life fitness anchored centre in South Calgary with Macleod Trail exposure.

Saskatchewan Deals



Client Freshii

Location Golden Mile Shopping Centre
Regina

Size 1,268 sq.ft

Agency Tenant Representation

Description High profile unit in redevelopment of existing grocery anchored centre developed by Smart Centre.



Client Freshii

Location Thatcher Crossing
Moose Jaw

Size 1,200 sq.ft

Agency Tenant Representation

Description High profile end cap unit in Walmart shadow anchored shopping centre.



Client Freshii

Location Matrix Business Park
Saskatoon

Size 1,388 sq.ft

Agency Tenant Representation

Description Retail centre at Millar Avenue & Marquis Drive, the major North, South corridor of the Marquis Industrial area.





DANIEL LEE*

Principal

**Daniel J. Lee Personal Real Estate Corporation*

PROFESSIONAL EXPERIENCE

Daniel has acted on behalf of national and international retailers and retail developers in their site selection, design and leasing strategies.

SAMPLE CLIENTS

- Platform Properties Ltd.
- Mosaic
- Rexall

JASON SCHOUTEN*

Principal

**Jason Schouten Personal Real Estate*

PROFESSIONAL EXPERIENCE

Jason has worked with national and international retailers with their site selection, leasing strategies and negotiations, strategic expansion planning and roll-out services.

SAMPLE CLIENTS

- Freshii
- Panda Express
- Cora

MIKE HODGE

Vice-President

PROFESSIONAL EXPERIENCE

Mike has worked extensively throughout Western Canada and has acted on behalf of a number of national and international retailers and landlords.

SAMPLE CLIENTS

- Freshii
- Dairy Queen
- Cadillac Fairview

JAMES SHANDRO

Vice-President

PROFESSIONAL EXPERIENCE

James acts on behalf of landlords and developers with site acquisitions, marketing, and leasing, and also a number of exciting local retail tenants with site selection and lease negotiations throughout the Lower Mainland.

SAMPLE CLIENTS

- Pinnacle International
- Bosa Development Corp.
- Rogers Communications

CONNOR EDEN

Senior Associate

PROFESSIONAL EXPERIENCE

Over the last three years, Connor has worked throughout Western Canada and has acted on behalf of a number of national and international retailers.

SAMPLE CLIENTS

- Tim Horton's
- M&M Food Market
- Cora

JERON DILLON

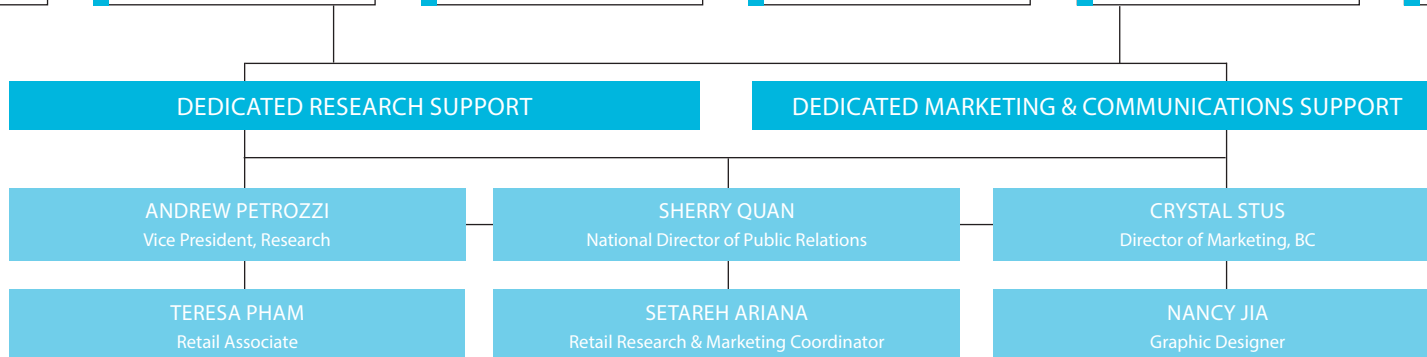
Senior Associate

PROFESSIONAL EXPERIENCE

Jeron has worked with a number of national and international companies with leasing, disposition, acquisition, and build to suit opportunities.

SAMPLE CLIENTS

- Myodetox
- Lorna Jane
- Canterra Developments





**AVISON
YOUNG**

avisonyoung.com

©2018 Avison Young. All rights reserved.

E. & O.E.: The information contained herein was obtained from sources which we deem reliable and, while thought to be correct, is not guaranteed by Avison Young Commercial Real Estate (B.C.) Inc.

 **CANADA'S
BEST
MANAGED
COMPANIES**